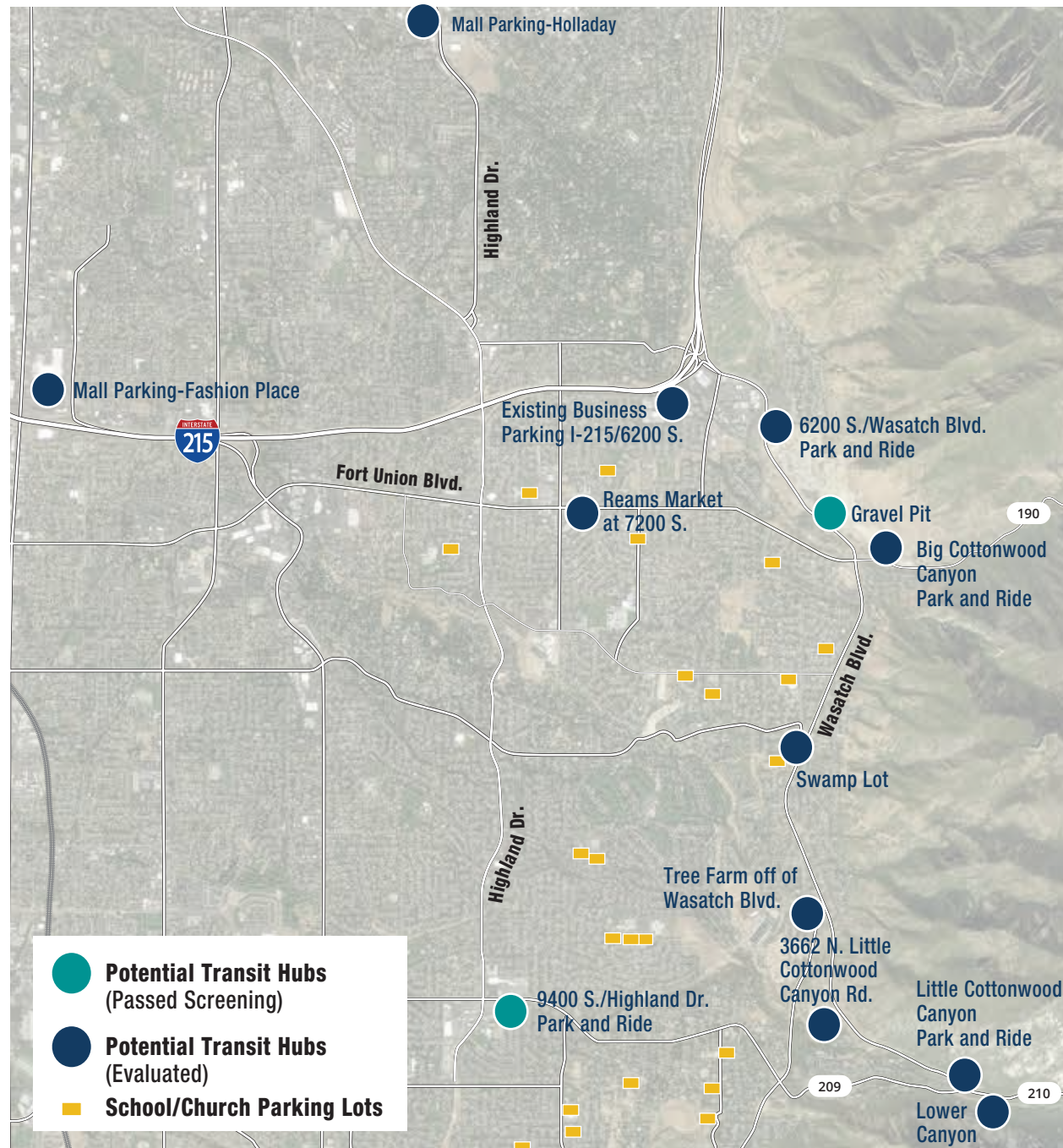


# MOBILITY HUB ALTERNATIVES

## PRELIMINARY MOBILITY HUB ALTERNATIVES EVALUATED

To support personal vehicle parking for the transit alternatives (bus, aerial transit and rail transit), UDOT evaluated 14 potential locations for a mobility hub to service Little Cottonwood Canyon. The mobility hub locations could be used for bus service directly to the ski resorts or for bus service to a train or gondola station located at the entrance to Little Cottonwood Canyon. These locations were used with each bus and gondola alternative to help evaluate each transit alternative.



## MOBILITY HUB ALTERNATIVE SCREENING RESULTS

UDOT determined that the best locations for transit hubs were the Gravel Pit and the UTA park and ride lot at 9400 South and Highland Drive. Both locations meet the lot size and availability requirements and would provide convenient access for users and transit to the Cottonwood Canyons.

Alternative	Screening Results (Red=Eliminated, Green=Pass)				Notes
	Available (Yes/No)	Convenient Access (Yes/No)	Lot Size	Pass Screening (Yes/No)	
Little Cottonwood Canyon Park and Ride	Yes	Yes	1.3 acres	No	Lot size is too small to accommodate parking requirements and would result in potential traffic congestion at the S.R. 209/S.R. 210 intersection similar to existing conditions.
Big Cottonwood Canyon Park and Ride	Yes	Yes	1.6 acres	No	Lot size is too small to accommodate parking requirements.
9400 South/Highland Drive Park and Ride	Yes	Yes	4 acres	Yes	—
6200 South/Wasatch Blvd. Park and Ride	Yes	Yes	1.6 acres	No	Lot size is too small to accommodate parking requirements in Little Cottonwood Canyon.
Reams Market at 7200 South	No	Yes	500 parking stalls	No	Currently in use for commercial business. Lot would not be available.
Tree Farm off of Wasatch Blvd.	Yes	No	28.9 acres	No	The lot includes steep terrain that may make construction difficult. In addition, the lot would put a high level of traffic in residential area and would be located in a residential area not compatible with a parking structure.
3662 North Little Cottonwood Canyon Rd.	Yes	No	6.85 acres	No	Location would cause congestion on Wasatch Blvd. during peak use times in a residential area similar to current conditions. Land is between two residential subdivisions which would not be compatible with a parking structure.
Swamp Lot	Yes	No	2.1 acres	No	Lot size is too small to accommodate parking requirements for Little Cottonwood Canyon.
Lower Canyon	Yes	No	6.5 acres	No	The lot would impact a heavily used Little Cottonwood Canyon hiking trail and would be immediately adjacent to Little Cottonwood Canyon Creek. Lot would result in potential traffic congestion at the S.R. 209/S.R. 210 intersection similar to existing conditions.
School and Church Parking Lots	No	No	Not applicable	No	Church lots would not be available on Sundays and some weekends during special events. School lots may not be available during weekdays, weekends during special events and some holidays.
Existing Business Parking at I-215/6200 South	No	Yes	3,000 parking stalls	No	An agreement with the owner would need to be reached to allow use and address liability concerns. Lot may not be available on weekdays and holidays.
Gravel Pit	Yes	Yes	65 acres	Yes	—
Mall Parking – Holladay	Yes	No	48 acres	No	Area does not have convenient freeway access. Would increase transit travel times and out-of-direction travel for users.
Mall Parking – Fashion Place	No	Yes	4,900 parking stalls	No	Currently in use for commercial business and would not be available on weekdays, weekends and holidays.

Traffic count data indicates about 40% of the traffic going to Little Cottonwood Canyon comes from the south Salt Lake Valley and uses 9400 South and S.R. 209, and about 60% comes from the north and uses S.R. 210. Based on the traffic count data, UDOT assumed that about 40% of transit users would park at the south transit hub and about 60% would park at the north transit hub.

Transit Ridership	Daily Ridership	Estimated Number of Parking Stalls		Parking Garage Size (square feet)		Cost (millions)	
	Little Cottonwood Canyon	North Hub	South Hub	North Hub	South Hub	North Hub	South Hub
30% ridership	5,200	1,440	960	474,470	316,313	\$31	\$20