

## DRAFT ALTERNATIVES PUBLIC INVOLVEMENT AND COMMENT EXECUTIVE SUMMARY

The Utah Department of Transportation (UDOT) began an Environmental Impact Statement (EIS) in the spring of 2018 for S.R. 210 in partnership with Utah Transit Authority (UTA) and the USDA Forest Service to provide an integrated transportation system that improves the reliability, mobility and safety for residents, visitors and commuters who use S.R. 210.

Received  
**6,500**  
formal comments

Based on the alternatives brought forward by the public and agencies during the scoping periods, purpose and need review, and Alternative Screening Methodology Report Review, UDOT conducted an alternative development and screening process. ***The review and public comment period for the results of the alternative development and screening process was from June 8 through July 10, 2020.*** During this period, UDOT received approximately 6,500 formal comments.

The Frequently Asked Questions (FAQ) guide addresses the common subjects identified in the comments.

### Notifications

- ✓ Press release
- ✓ Newspaper ads
- ✓ Website
- ✓ Social media
- ✓ Email list





As a result of the COVID-19 Pandemic, UDOT held virtual public meetings and an in-person meeting for those without internet access that was live-streamed to the project Facebook group. The meetings were held June 22-24, 2020 from 6 to 8 p.m., using a presentation style format followed by a question and answer period. There were about 290 attendees who provided nearly 500 comments or discussion topics.



**During the 35-day public review period, the following meetings were held with stakeholders:**

- ✔ Town of Brighton
- ✔ Central Wasatch Commission Board
- ✔ Lower LCC Businesses/Access
- ✔ Granite Community Council
- ✔ Save Our Canyons Coalition
- ✔ Town of Alta Council
- ✔ Cottonwood Heights/Granite residents
- ✔ Salt Lake City Department of Public Utilities
- ✔ Big & Little Cottonwood ski resorts
- ✔ Salt Lake City Council
- ✔ Cottonwood Heights City Council
- ✔ Sandy City Council
- ✔ Town of Alta staff
- ✔ Holladay City Council
- ✔ Utah Office of Tourism
- ✔ Business community representatives
- ✔ Salt Lake County Council



# Primary Theme of Comments

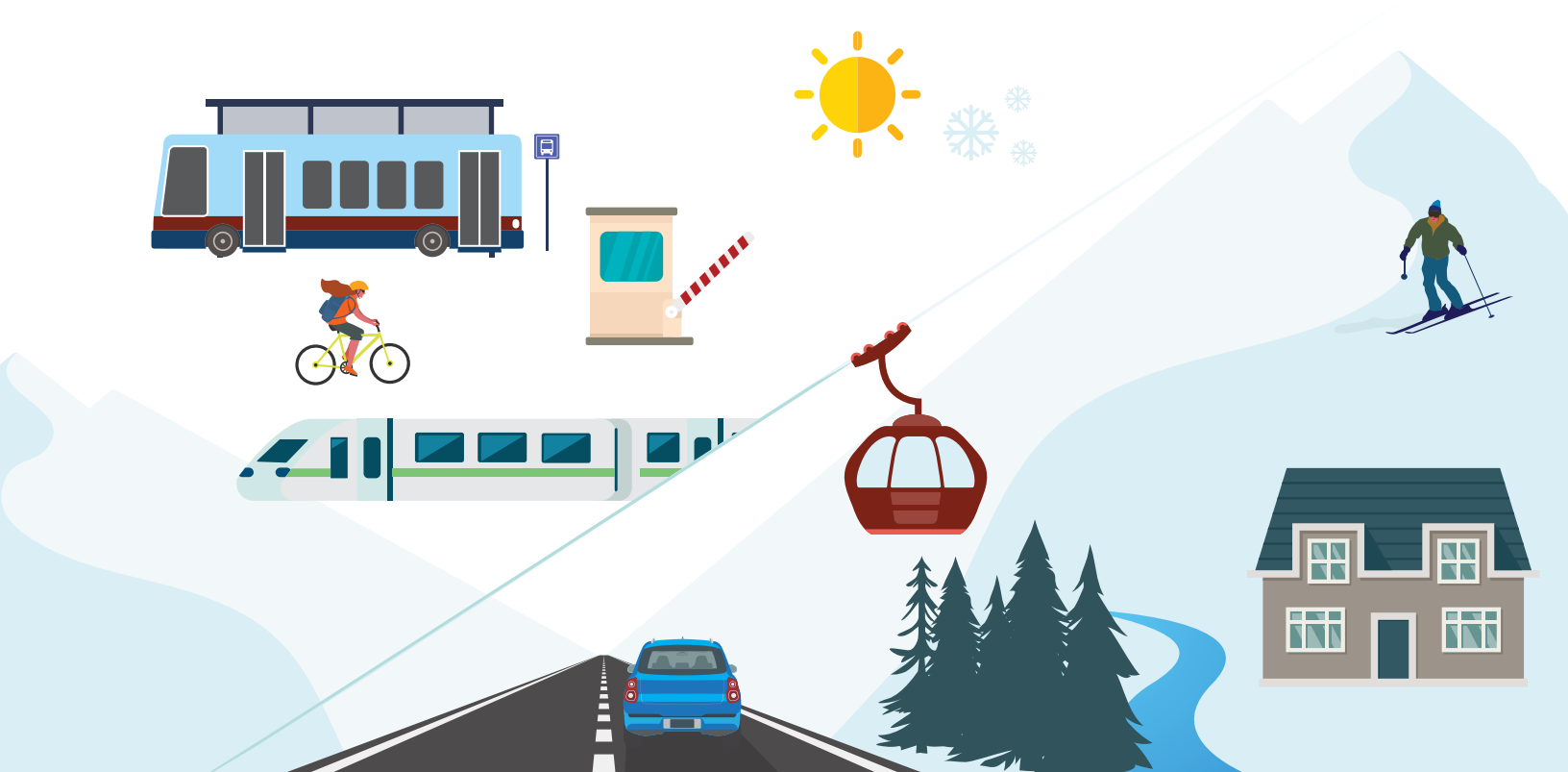
Many commenters recognize that traffic congestion in the canyon has been steadily growing and that there is a need for a transportation solution both along Wasatch Boulevard and within the canyon.



A wide variety of stakeholders including residents, canyon users, businesses and non-governmental organizations supported and/or opposed a specific alternative.

## Common subjects

- ⊗ Bus alternatives, including type of bus, roadway capacity and additional stops
- ⊗ EIS process and implementation, including environmental analysis, alternative selection and construction timeline
- ⊗ Gondola alternative, including base station locations, cost, operational considerations, bike access and avalanche mitigation
- ⊗ New alternatives, including La Caille Gondola Base Station, D.A.V.E and Boring Company tunnel
- ⊗ Additional rail analysis, including revised alignments, technology and costs
- ⊗ Project purpose, including study area scope, dispersed recreation access and summer service
- ⊗ Transit stops and mobility hubs, including additional stops at trailheads, mobility hub locations and amenities
- ⊗ Travel demand management, including tolling, vehicle restrictions and enforcement and future travel demand projections
- ⊗ Visitor capacity, including capacity analysis, watershed impacts and induced demand
- ⊗ Wasatch Boulevard, including speed limits and residential impacts



## Key Concerns



Access to dispersed recreation and winter access



Overcrowding



Visual impacts



Water quality impacts



Year-round access

## What People Are Saying

AVALANCHE MITIGATION OTHER  
 NO ACTION VEHICLE ACCESS/RESTRICTION  
 STUDY AREA CARRYING CAPACITY ROADWAY CAPACITY  
**AERIAL TRANSIT** TUNNEL PUBLIC/PRIVATE PARTNERSHIPS  
 COMMUNITY IMPACTS TRAILHEADS OPERATIONS/MAINTENANCE/SAFETY  
**PARKING ENVIRONMENTAL IMPACTS**  
**BUS TRANSIT** RAIL TRANSIT TOLLING/FEE  
 PEDESTRIAN/BIKE SUMMER OPERATIONS  
 WASATCH BOULEVARD

## Stay Connected

 [udot.utah.gov/littlecottonwoodeis](http://udot.utah.gov/littlecottonwoodeis)

 [littlecottonwoodeis@utah.gov](mailto:littlecottonwoodeis@utah.gov)

 UDOT Little Cottonwood Canyon Environmental Impact Statement (EIS)

 @UDOTlcceis

 Little Cottonwood Canyon EIS c/o HDR  
2825 E. Cottonwood Parkway, Suite 200  
Salt Lake City, UT 84121-7077

 801-200-3465